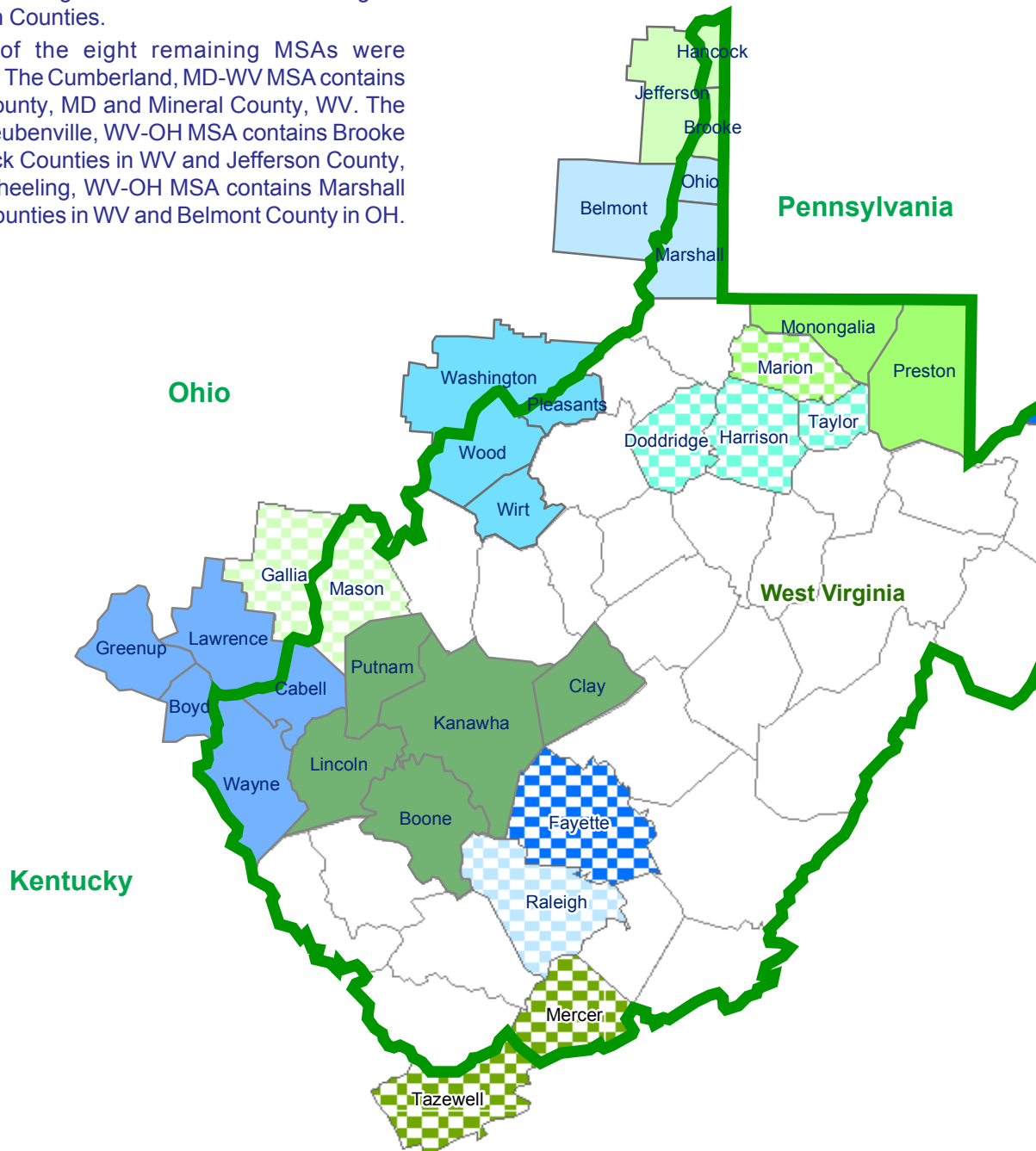


## The Shape of Things to Come

In 2003, the federal Office of Management and Budget (OMB) released new Metropolitan Statistical Area and Micropolitan Statistical Area designations based on data collected during the 2000 census. West Virginia now has components, in whole or in part, of ten MSAs. Two of these MSAs are located entirely within the borders of West Virginia. The Charleston MSA contains Kanawha and Putnam Counties, and has added Boone, Clay, and Lincoln Counties. The newly created Morgantown MSA contains Monongalia and Preston Counties.

Three of the eight remaining MSAs were unchanged. The Cumberland, MD-WV MSA contains Allegany County, MD and Mineral County, WV. The Weirton-Steubenville, WV-OH MSA contains Brooke and Hancock Counties in WV and Jefferson County, OH. The Wheeling, WV-OH MSA contains Marshall and Ohio Counties in WV and Belmont County in OH.

The five remaining MSAs contain numerous changes. The newly created Hagerstown-Martinsburg, MD-WV MSA has added Morgan and Berkeley Counties with Washington County, MD, for a tri-county MSA. Huntington-Ashland, WV-KY-OH MSA dropped Carter County, KY, and now contains Boyd and Greenup Counties in KY, Lawrence County in OH, and Cabell and Wayne Counties in WV. The Parkersburg-Marietta WV-OH MSA, formerly containing just Wood County,



WV and Washington County, OH, has now added two additional West Virginia counties: Wirt and Pleasants. The Washington-Arlington-Alexandria, DC-VA-MD-WV MSA has dropped Berkeley County, WV and Culpeper and King George Counties in VA, and now consists of DC, the counties of Calvert, Charles, Prince George's, Frederick, and Montgomery in MD, the counties of Arlington, Clarke, Fairfax, Fauquier, Loudoun, Prince William, Spotsylvania, Stafford, and Warren along with Alexandria City, Fairfax City, Falls Church City, Fredericksburg City, Manassas City, Manassas Park City in VA, and Jefferson County, WV.

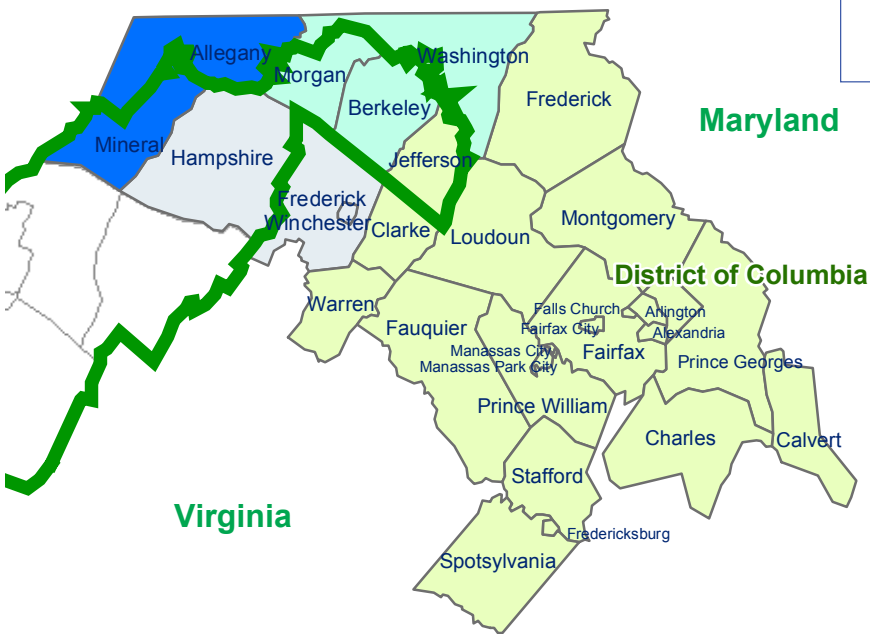
The Winchester, VA-WV MSA is newly created and consists of Frederick County and Winchester City in VA and Hampshire County, WV.

West Virginia now has six Micropolitan Statistical Areas, four of which are contained entirely within state borders. These are Beckley, containing Raleigh County; Clarksburg, containing Doddridge, Harrison, and Taylor counties; Fairmont, containing Marion County; and Oak Hill, containing Fayette County. The Bluefield Micropolitan Statistical Area contains Mercer County, WV and Tazewell County, VA. The Point Pleasant Micropolitan Statistical Area consists of Mason County, WV and Gallia County, OH.

The Bureau of Employment Programs will begin publishing data on these areas in limited detail in early 2005. More detailed data will follow at a later date.

*Metropolitan Statistical Areas* include an Urbanized Area with 50,000 or more residents.

*Micropolitan Statistical Areas* include an Urban Cluster with at least 10,000 residents.



**Metropolitan and Micropolitan Statistical Areas**

